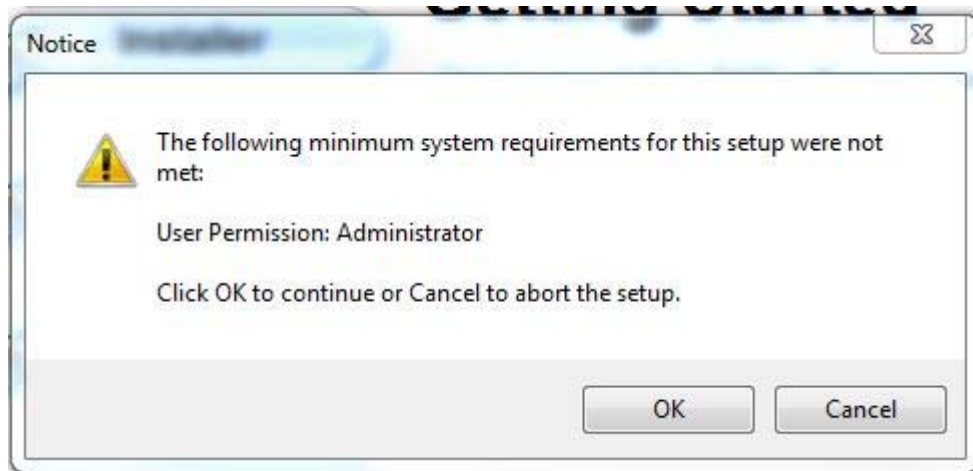


W3 Insights White Paper – P.A.S.S. Software Compatibility Issues with Windows 7.

HOW TO RUN PASS SOFTWARE ON WINDOW 7.

Before beginning an installation, please make sure you are either logged on as administrator or you have permission rights at administrator level.

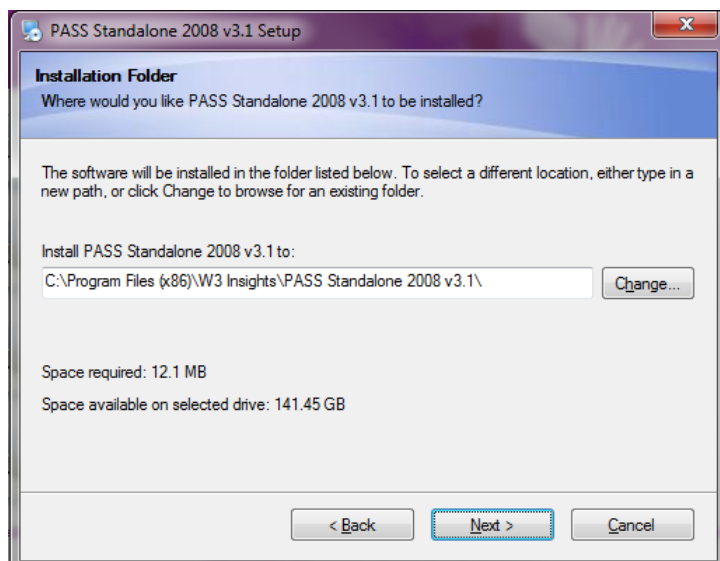
If you don't, Windows 7 will not permit you to install the software and you will see a screen like this:



As long as you fulfil the necessary permission rights, installation should be straightforward.

Bear in mind that the default installation folder, however, for Windows 7 is slightly different and will be:

C:\Program Files (x86)\W3 Insights\PASS Standalone 2008 v3.1



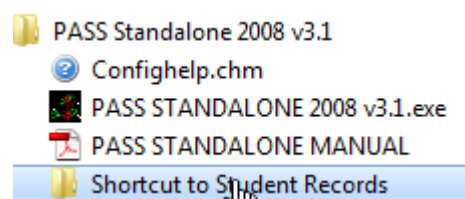
Once installed, you can locate your reports in your installation folder in the usual subfolder- Stu_Recs i.e.

C:\Program Files (x86)\W3 Insights\PASS Standalone 2008 v3.1\Stu_Recs etc

The Stu_Recs folder can also be accessed in Windows 7 from the Start Button:

Start>All Programs>PASS Standalone 2008 v3.1

(or whatever the name/version of your installed software)



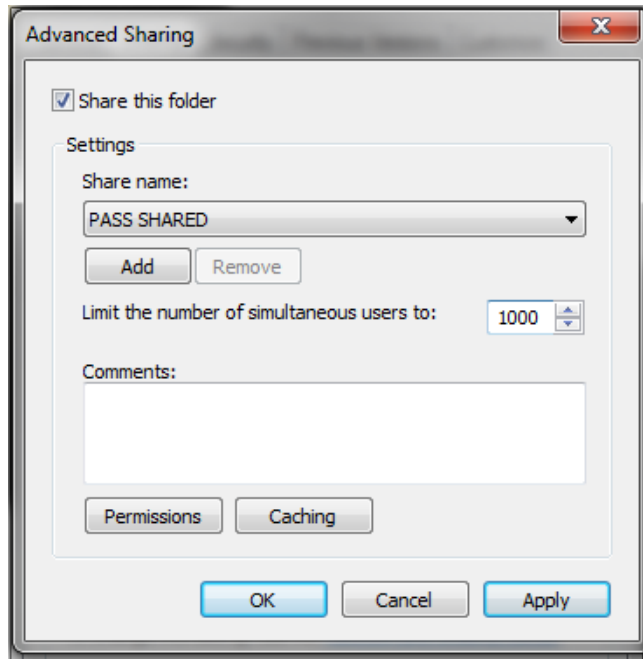
ADDITIONAL NOTES FOR P.A.S.S. NETWORK SOFTWARE ON Windows 7.

The following configurations have been comprehensively tested with our network software:

1. Installation and local application run on a Windows 7 machine setup as a standalone.
2. Installation and local application run on a Windows XP machine setup as a standalone.
3. Installation and software run on a Windows 7 machine setup as server to client Windows 7 and XP machines.
4. Installation and software run on a Windows XP machine setup as server to client Windows 7 and XP machines.

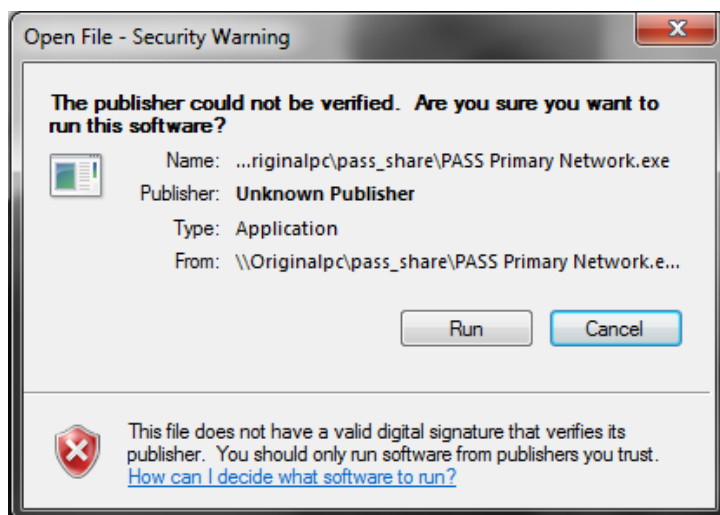
In each case, so long as the user logs on as an administrator or with administrator rights and installs the software to a shared network area, with permission settings configured for at least read/write/delete there should be no issues in terms of successful network auditing using this software. For more specific guidance on the shared area configuration settings please refer to your companion network software user manual.

If a folder is set up in Windows 7 for sharing please ensure that you allow a sufficient number of simultaneous users to access the application and its associated shared resources. The default sharing allowance may be set up as 20 simultaneous users which is likely to be insufficient for high-volume P.A.S.S. auditing. Within the "advanced sharing" option of folder properties, change the "number of simultaneous users" to a more realistic number as shown below:



If you attempt to run a Windows 7 machine as a client machine linked to a server, having installed the "setup.exe" linking application (see manual), when you first click on the desktop icon to run the software on a client machine you may see a security warning concerning a valid digital signature.

As with other software, please ignore the warning and just click the "Run" button.



For additional guidance on Windows Vista installations please refer to the companion white paper:

<http://www.w3insights.pass-survey.com/Resources/PASS%20Instructions%20for%20Use%20with%20Vista.pdf>